
Princess V48



Description

Princess V48, launching May 2010. Perfect maintained Clearwater boat (Swiss lakes). The V48 offers phenomenal accommodation and luxury, both inside and out. With a huge sunbed aft over a large dinghy garage, fully equipped single level cockpit and open backed soft topped roof system, she puts you in touch with the elements. Her deep V-hull provides highest performance and outstanding handling. Fitted with full Med spec including; generator, hydraulic passarelle, air con/heating, bow thruster, Furuno plotter, Radar, GPS, autopilot, VHF, garage for tender with electric winch and rollers, teak cockpit, teak floor in saloon, leather saloon upholstery, oak interior, TV, DVD, low level cockpit LED's ect.

We will be happy to send you more photos and further information. A mooring place on Lake Lucerne can be taken over if demanded.

Specification

General

Boot ID:	V48220
Make/Brand:	Princess V48
Year built:	2008
Launching:	2009
Mooring:	Vierwaldstättersee

Engines

Engine:	Volvo D9-575
Drive:	Shaft
Power HP (max):	2 X 575
Operating hours:	460
Fuel:	Diesel

Dimensions

Length:	1496 cm
Beam:	401 cm

Tanks

Fuel capacity:	1680 l
Fresh water capacity:	364 l

DISCLAIMER

The Company offers the details of this vessel in good faith but cannot guarantee or warrant the accuracy of this information nor warrant the condition of the vessel.

A buyer should instruct his agents, or his surveyors, to investigate such details as the buyer desires validated. This vessel is offered subject to prior sale, price change, or withdrawal without notice.

Inventory

HULL COLOUR

- blue and white

NAVIGATIONAL INSTRUMENTS

- Raymarine ST60 speed log
- Raymarine ST60 depth sounder
- GPS
- Plotter
- Raymarine autopilot
- Autopilot with remote control
- Furuno Radar
- DSC VHF

DECK EQUIPMENT

- Stainless steel anchor
- Remote control electric anchor winch
- Hardtop with electric sunroof
- Teak on swim platform
- Teak on cockpit
- Cockpit table
- Cockpit wetbar with coolbox
- BBQ in cockpit
- Hydraulic passerelle
- Boatgarage with electric winch
- Transom shower hot/cold

TECHNICAL DEVICES ON BOARD

- Bow thruster
- Remote controlled searchlight
- Underwater lights
- DVD-Player
- LCD TV in saloon

GENERATOR

- Onan 7 kW generator

AIR CONDITIONING

- Reverse cycle air conditioning

Inventory

SECURITY EQUIPMENT

- Fire extinguisher
- Automatic fire extinguisher system in engineroom
- Automatic bilge pump

INTERIORS

- 4 berths in 2 cabins
- Refrigerator with freezer compartment
- Lower dinette conversion to additional berth
- Ceramic hob
- Microwave w. oven and grill
- 2 heads (2 en-suite)
- Light Oak interior wood Satin finish
- saloon flooring in teak

Photo Gallery



Photo Gallery

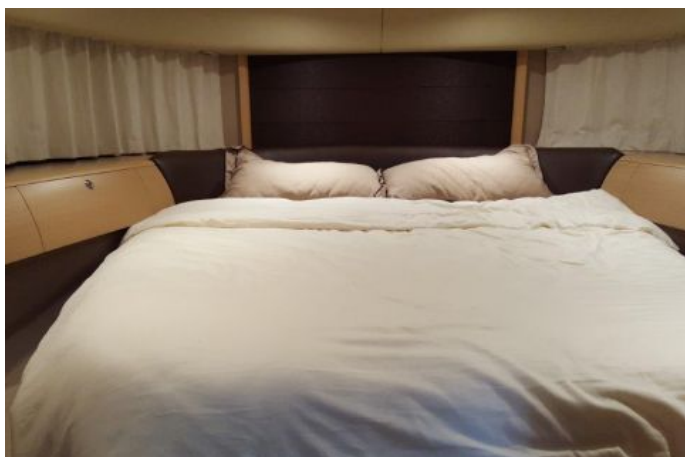


Photo Gallery

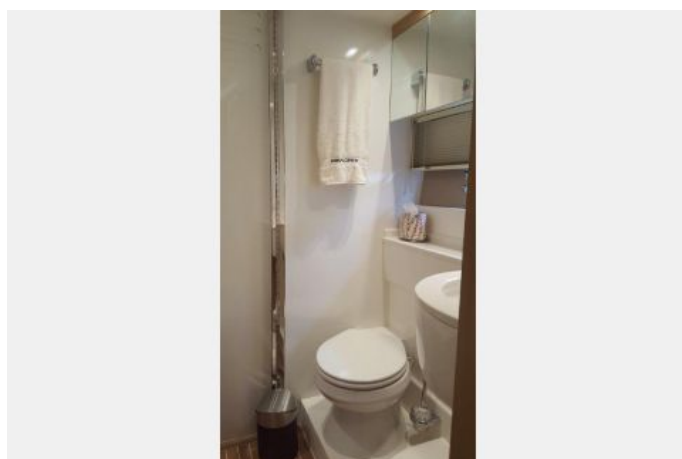
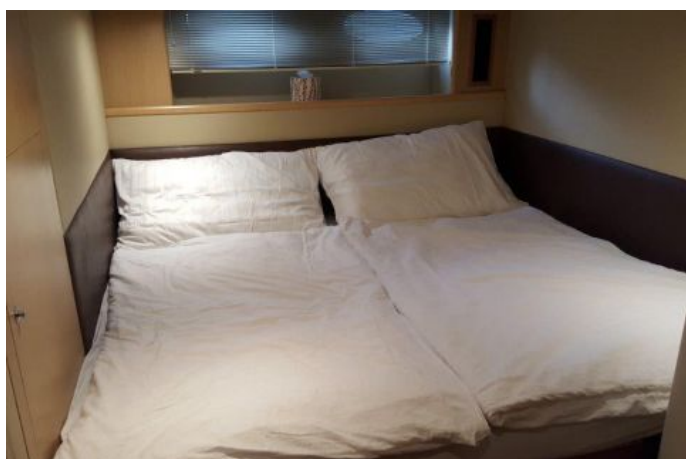
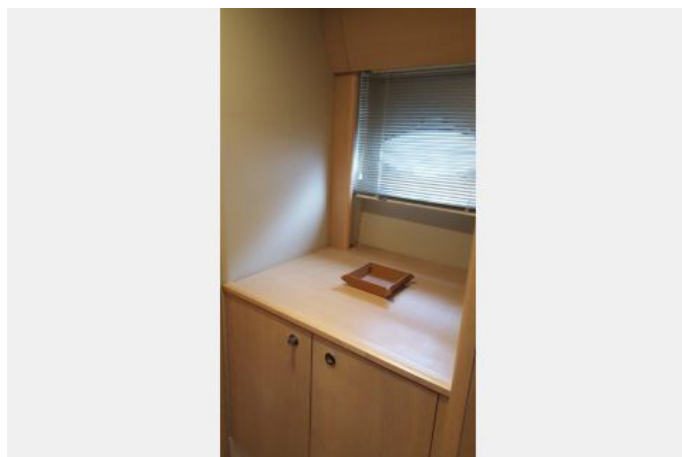
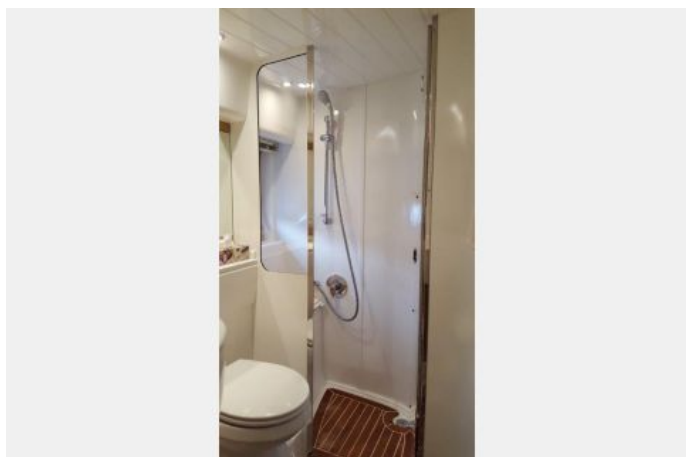
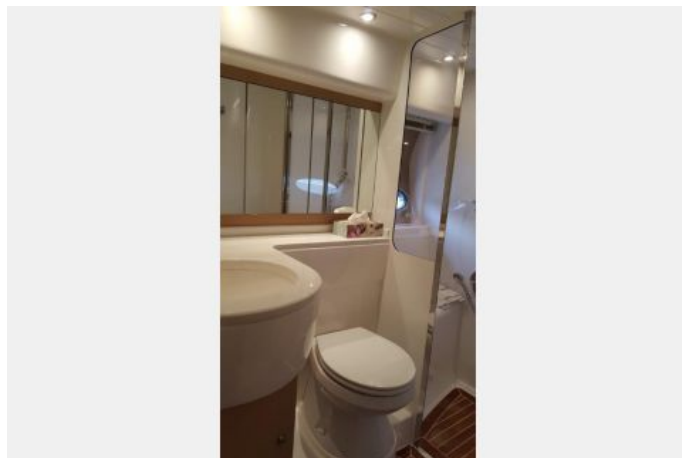


Photo Gallery

